



U.S. DEPARTMENT OF  
**ENERGY**

OFFICE OF  
**ENVIRONMENTAL  
MANAGEMENT**

# **Idaho Cleanup Project Citizens Advisory Board AMWTP Retrieval Status**

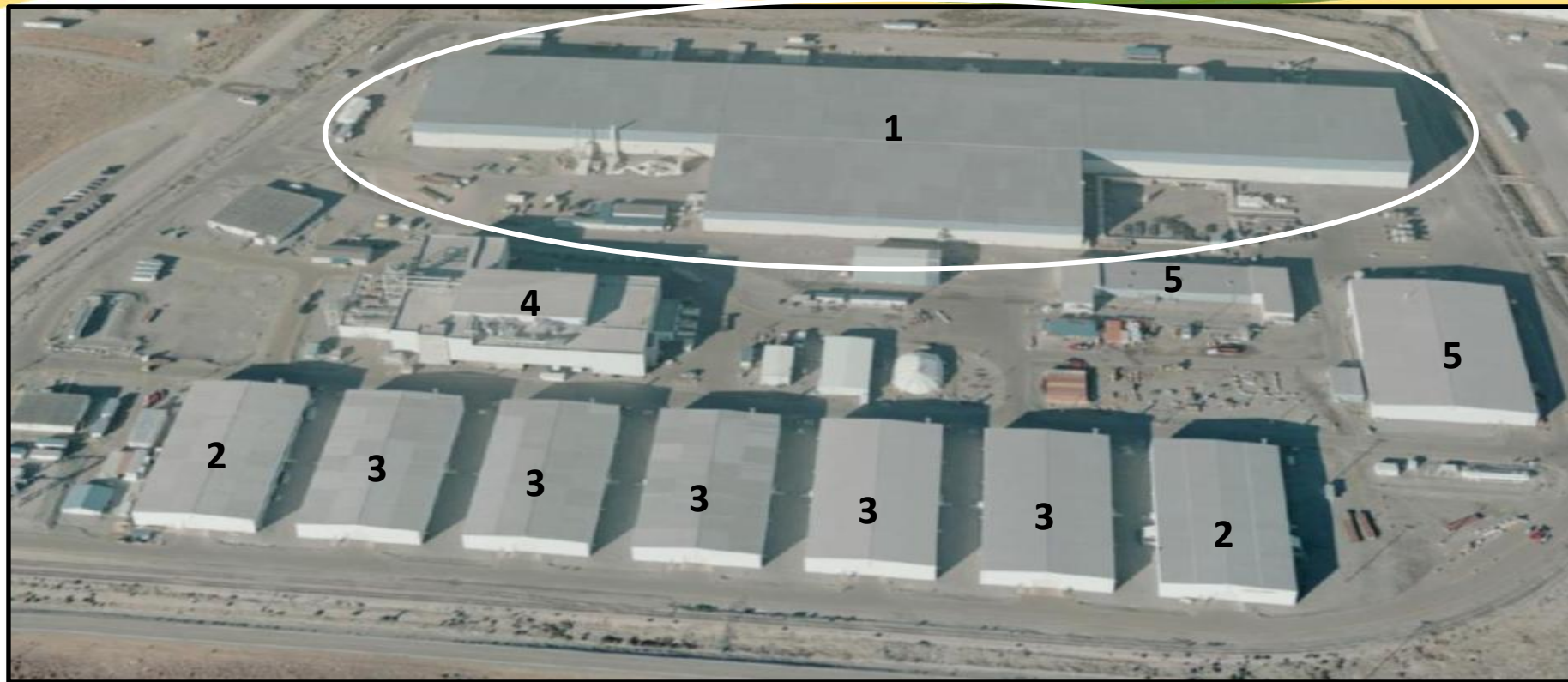
---

**Mary V. Willcox**

*Retrieval Operations Activity Manager*  
Idaho Cleanup Project

**June 23, 2015**

# AMWTP Aerial View



1=Retrieval

2=Characterization

3=Storage

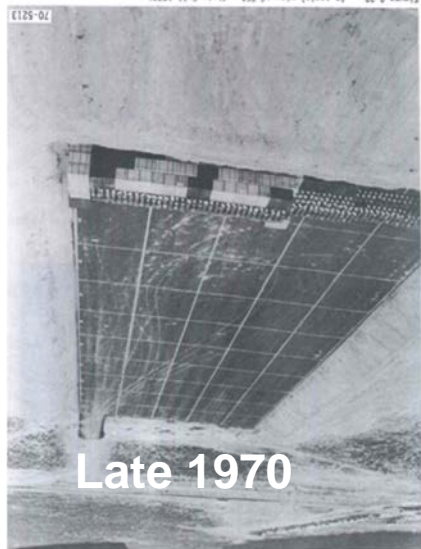
4=Treatment

5=Payload & Shipping





# Original Waste Placement



Late 1970



Late 1971

71-5066

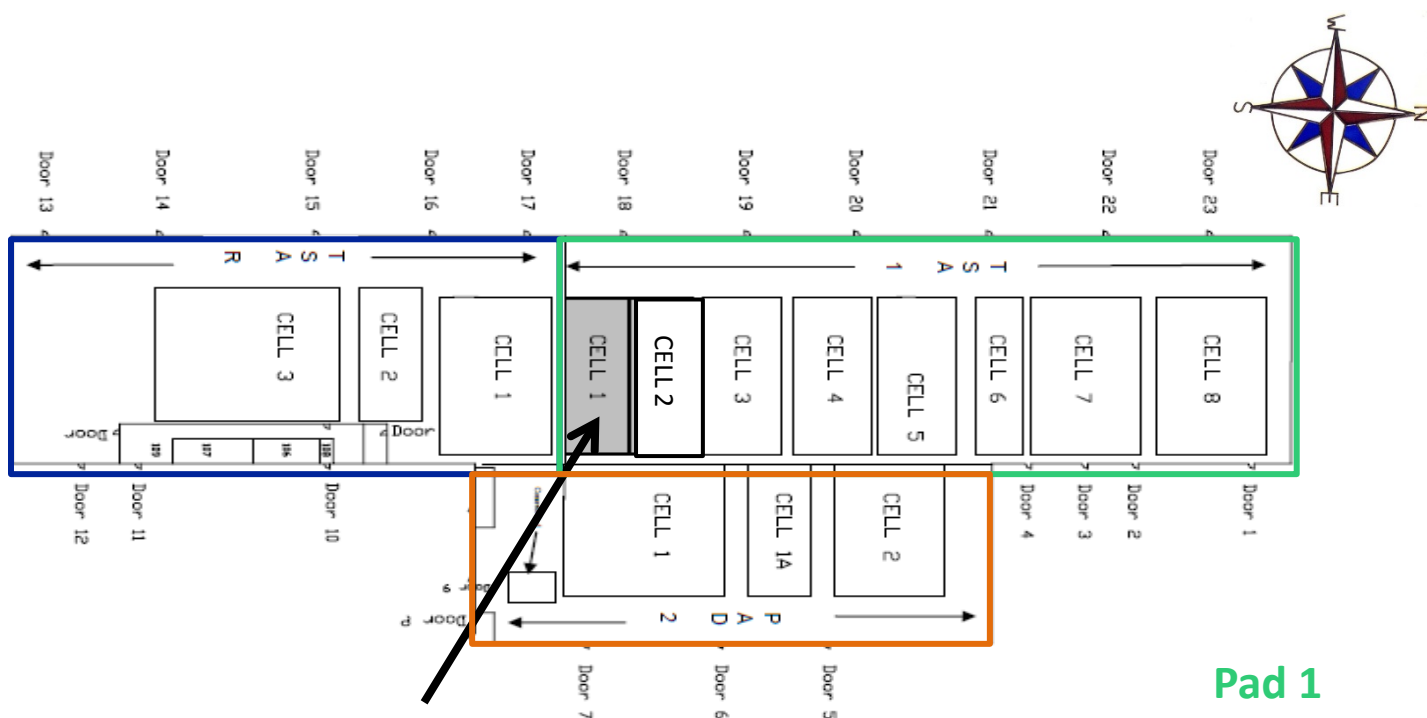
*Placement of transuranic waste drums and boxes from Rocky Flats at TSA-RE looking south, 1971 Pad 1 Cells 1-3*

*Early placement of transuranic waste overpack cargo containers with drums from Pits 11 and 12. Cargo over-packing from Pits 11 and 12 occurred 1976-1978.*



Large Butler Building built over soil covered berm, 1996

# Transuranic Storage Area-Retrieval Enclosure (TSA-RE) Floor Plan



Pad 1

Pad 2

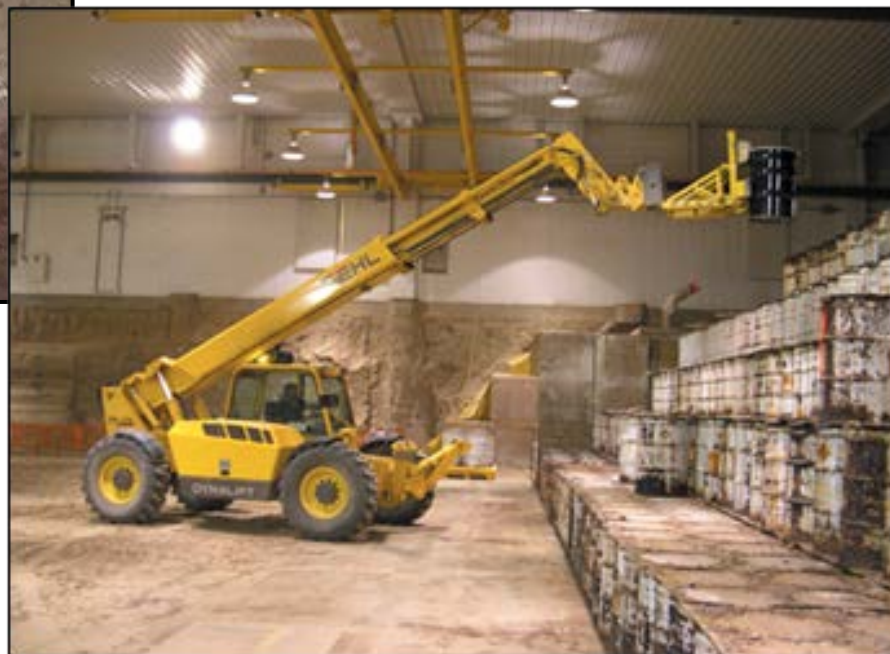
Pad R

Location of remaining waste in Cell1 of Pad 1  
Thirteen cells have been retrieved.

# Soil Removal Mar 2003 to April 2010

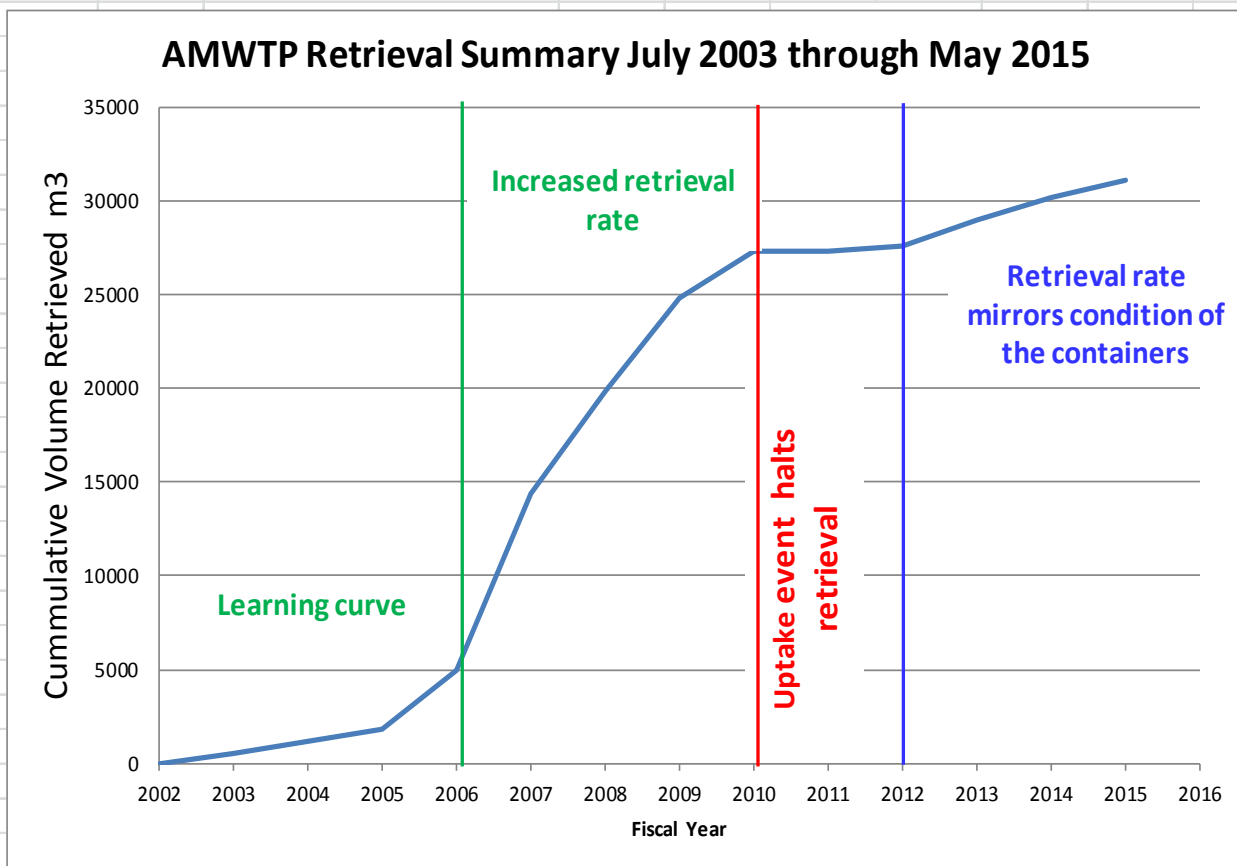


Soil berm inside of TSA-RE during initial soil removal



Pad 2 Cell 2 initial drums retrieval

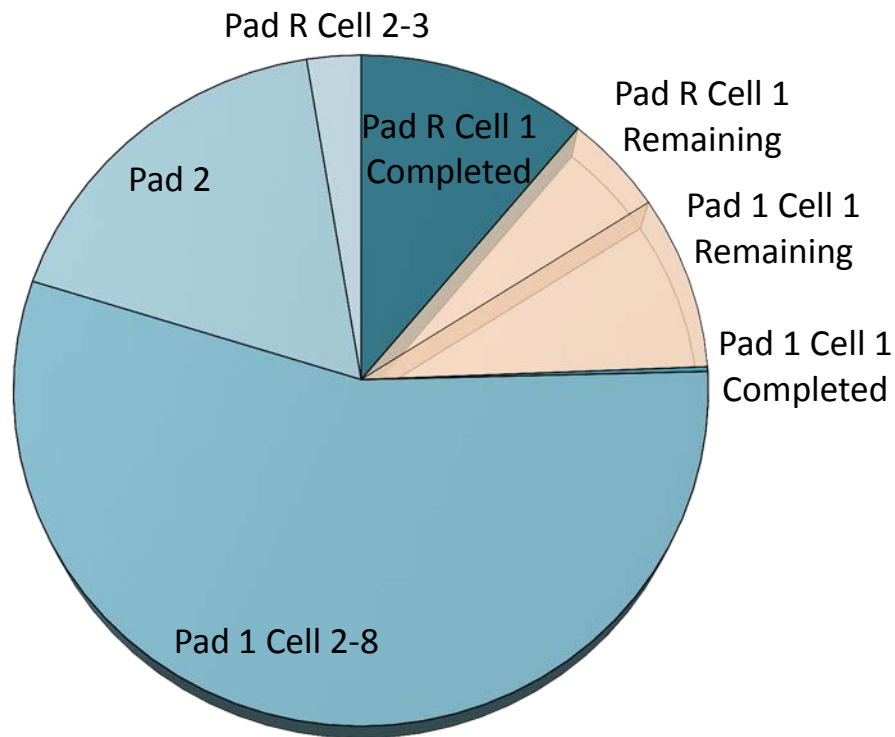




# Retrieval Status – May 13, 2015

*Based on Number of Containers*

**Retrieval Cell Status**



TSA-RE Cells	Floor Space Percent	Percent Complete
Pad 2	18	100%
Pad 1 Cell 2-8	55	100%
Pad R Cell 2-3	3	100%
Pad R Cell 1	16	69%
Pad 1 Cell 1	8	<2%
Total	100	87%

# TSA-RE Pad 2 and Pad 1 Cell 1 Retrieval Face



TSA-RE Pad 2 Drum Face Summer 2003



Pad 1 Drum Face Winter 2015

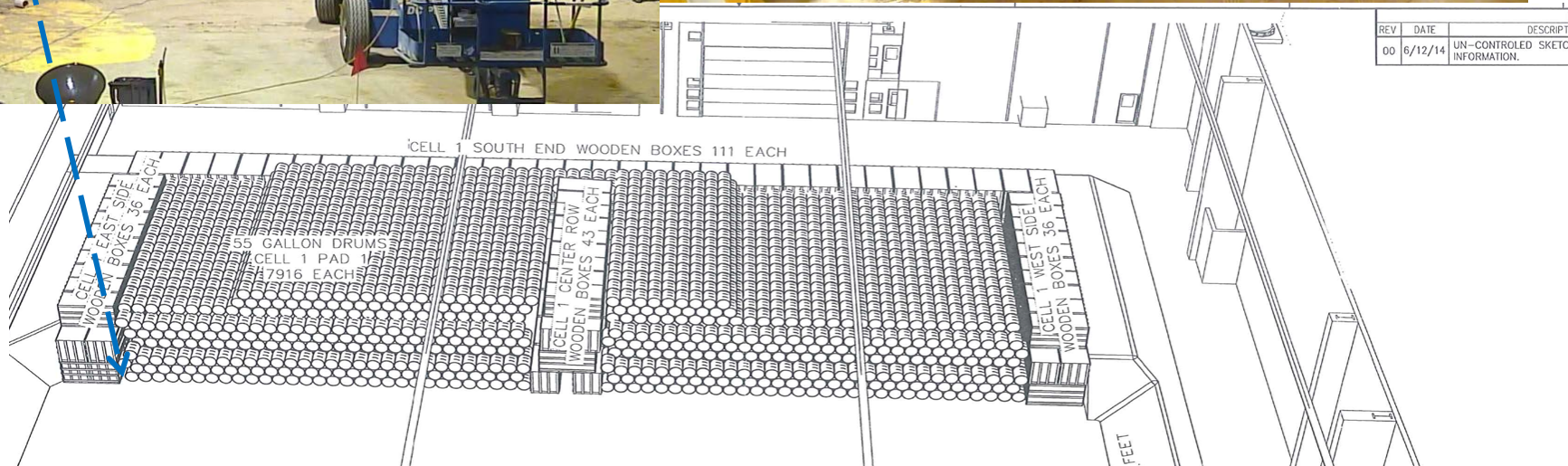


Pad 1 staging area May 2015

- Soil sacks
- Over-packed drums
- Metal boxes
- Box Retrieval Soft-sided Over-pPcks



# End state for the contract





Developed and implemented hazard controls, and performed the work within the controls.

The box recovery presented crews with several challenges.

After two full days, operators and radiological technicians were able to get the highly contaminated waste repackaged into three BR90s.

*"It was a great couple of days for this group and one of the most challenging boxes ever retrieved."*

Scott Biorn, ITG Retrieval Manager



# Cargo Container Unloading

- Cargo container unloading is conducted only on Pad R area.
- Each cargo container can hold up to 96 waste containers.
- PPE and special equipment required:
  - Level B protection suit with compatible respiratory protection (PAPR)
  - Hands free radio for communication
  - Hand held thermal-imaging camera
  - Lexan blast shield
  - Explosion resistant HEPA filter exhauster and exhaust hose
  - Magnesium Oxide (metal fire) fire extinguishers (staged)



# Evolution of Cargo Container Drum Retrieval



# Current Conditions of Cargo Drums

